

---

# Scientek™

Hospital and Laboratory Equipment

## CART & UTENSIL WASHER



---

**SW 6000 Series**

With a design life in excess of thirty years the purchase of a floor loading cabinet washer is an important decision. **With the washer experience at Scientek we would like to make this an easy task.**

Scientek's SW6000 Series washers are such an obvious choice, for your decontamination central supply needs.

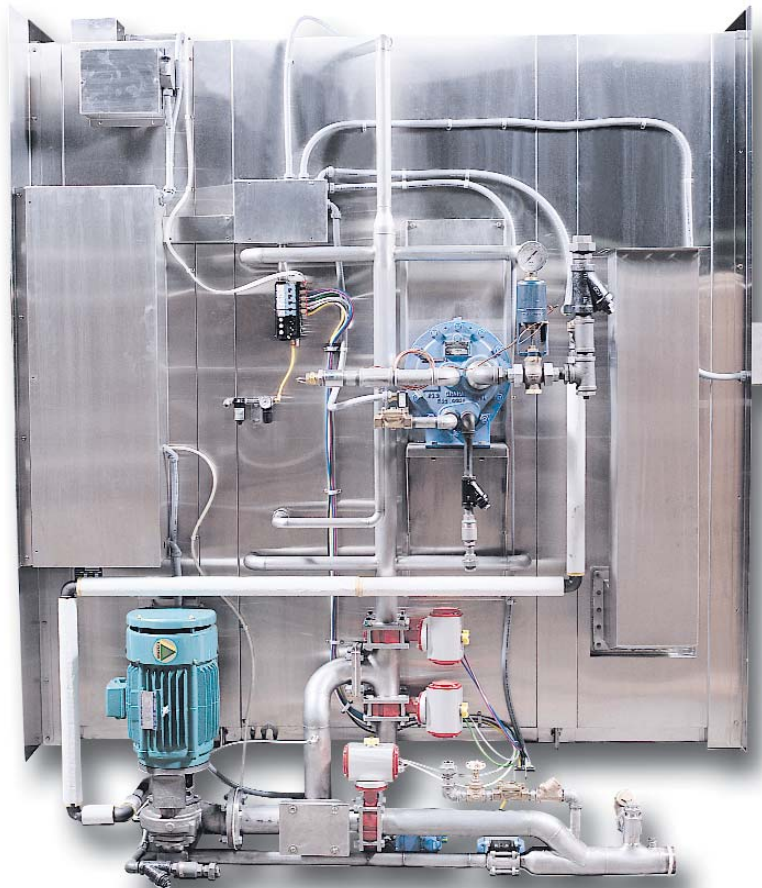
- **The SW6000 Series Cart and Utensil Washers from Scientek have a simple well proven engineered washer design.**
- **The powerful and effective rotating spray washing arms, together with the versatile 10 cycle programs, make this the winning washing combination.**

- **Proven effective overlap rotary spray washing**
- **Powerful impinging water pressure sprays ware clean**
- **Versatile aqua-pulse washing system supplies maximum water to required side**



# Scientek's exceptional features include:

- Internal safety pull cable - emergency stop
- Friction release - safety door hardware
- Sanitary gaskets and bolted construction for ease of installation and egress
- Custom chamber sizes to suit load
- Direct quick cart washing spray option
- Non-proprietary parts
- Built-in steam hot water booster
- Self-cleaning inline debris strainer
- Guaranteed 180°F final rinse process
- Two door front and rear controls
- Cold water pre-wash



**UC 6000 Multi-Level  
Utensil Wash Cart**



- Simple touch controls
- Full display cycle status and diagnostics
- Pre-programmed 10 cycle selection
- Colour screen control interface
- Event, time and temperature displayed
- Modem connection for factory upgrades

# SW6000 CART & UTENSIL WASHER SERIES

**Table of washer cabinet models for the size you need.  
Customized widths, heights and lengths are our specialty.**

MODEL #	INTERIOR CABINET SIZE	EXTERIOR CABINET SIZE	PUMP MOTOR
SW 6100	41" W x 84" H x 80" L 1042mm x 2134mm x 2032mm	55 1/2" W x 91" H x 84" L 1410mm x 2311mm x 2134mm	7.5 Hp
SW 6400	48" W x 88" H x 90" L 1219mm x 2235mm x 2286mm	62 3/4" W x 95" H x 96" L 1594mm x 2413mm x 2438mm	10 HP
SW 6400L	48" W x 88" H x 128" L 1219mm x 2235mm x 3251mm	62 3/4" W x 95" H x 132" L 1594mm x 2413mm x 3353mm	15 Hp
SW 6400WL	68 1/2" W x 88" H x 128" L 1740mm x 2235mm x 3251mm	83 1/4" W x 95" H x 132" L 2115mm x 2413mm x 3353mm	20 Hp

- **All heights measured above floor level.**
- **Scientek will provide mechanical service and installation drawings on request.**
- **Please consult factory for further details on how we can help you.**

Optional cart washer features & accessories allow for personal customization:

- **Custom interior chamber sizes**
- **Low profile base (no pit required)**
- **Electric heating in place of standard steam heating**
- **Automatic cold water drain discharge cooling**
- **120 degree F temperature rise to process supply water**
- **80 GPM high volume H.W. fill rate**
- **Recessed wall or barrier isolation**
- **Cycle data printer**
- **Data system reporting**
- **Direct quick connect cart washing**
- **Chemical dispensing and monitoring system**
- **Devapourmatic drying system - self contained (no exterior exhaust required)**
- **Tilt floor or tilt ramp**
- **QLCT-6 - Flat deck washing system**
- **UC-6000 - Multi-level utensil wash cart**
- **QLSP-6 - Bottle washing spindle cart**
- **SA-6-Seismic anchoring**
- **Conveyorized process indexing load & unloading of carts automatically**



**QLSP-6 Bottle Washing Spindle Cart**

For additional product information please contact the factory or the Scientek representative in your area.

**Scientek**<sup>TM</sup>  
Hospital and Laboratory Equipment